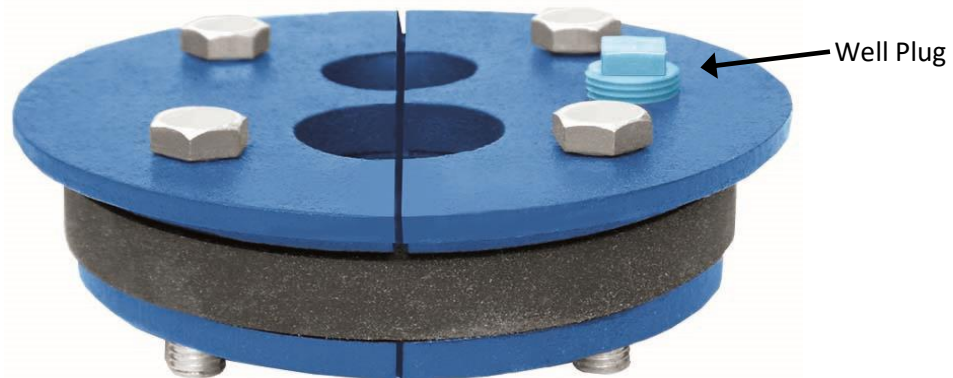


Disinfecting A Private Well

Instructions are for the disinfection of a 4" well casing or larger. If your well has a 2" well casing with an above ground pump, consult a professional well driller. Instructions are for informational purposes and a professional well driller is always recommended.

1. **Flush the System** – If your water is cloudy, let the water run for 10 to 15 minutes before disinfecting.
2. **Bypass Any Existing Treatment Systems** – Put all softeners and or filters on bypass prior to disinfection process. Failure to do so can damage the equipment.
3. **Chlorinate the Well** – Use safety glasses and gloves to protect yourself and take care not to spill the bleach on clothing or other sensitive areas. Use household or pool store bleach which typically has a chlorine concentration of 6% to 12% respectively. Do not use bleach products with any additives or perfumes. The amount of bleach needed can vary and a way to estimate can be found in the chart on page 2. Mix the bleach in a bucket of water. Remove the well plug or vent (see picture on page 2) and then use a funnel or other device to pour the bleach into the well.
4. **Recirculate** – This step is **very important**. Recirculate the bleach with the water in the well by attaching a hose to the nearest outside faucet and allow the water to run onto the ground until you smell bleach. Then place the hose in the well plug or funnel where you poured the bleach and allow the water to run back into the well for 20 to 30 minutes or until the pump has cycled at least three times. Remove the hose and replace the well plug or vent.
5. **Fill Pipes** – Turn on each tap attached (hot and cold) separately including kitchen, bathroom, and outdoor faucets. Start with the nearest tap to the well. Let the water run until you smell bleach then turn it off and go to the next tap. Turn off electricity to the pump and let sit overnight or at least 8 hours.
6. **Flush** – Turn on electricity to the pump and flush the chlorinated water out of the system. Choose an outdoor faucet and let the water run onto the ground away from the septic tank, canals, or areas where vegetation may be harmed. Run until you can no longer smell bleach. This removes the bleach from the well. Note that the water at this point may be dark in color as the bleach can disturb built up materials in the well and piping. Next turn on each tap in the inside the house until you can no longer smell bleach and the water clears. Once the system has been flushed of all bleach and the water is clear, the water can be used for laundry and bathing but you should not use the water for drinking, brushing teeth, making ice or preparing food. Wait 1 to 4 days after flushing to have the water tested for coliform bacteria. You may have to repeat this process before coliform results are satisfactory.

Amount of water in well (feet)	Well Casing Diameter (inches)		
	2	4	6
25	2 Cups	2 Cups	2 Cups
50	2 Cups	4 Cups	4 cups
100	3 Cups	5 Cups	8 Cups
300	3 Cups	6 Cups	10 Cups
Unknown	3 Cups	6 Cups	10 Cups



The blue plug in this picture is the well plug/vent. It can be plastic, brass, or galvanized and must be reinstalled. **Only use this opening to pour in bleach. Do not loosen the four bolts around the seal or it will impact the ability to prevent contamination.** If the plug is made of plastic it can crumble very easily. Best to get a replacement before starting. They can range in size from ¼" to ¾" so measure before purchasing. If in doubt, call a professional.